

PROJECT LAFARGE

Wössingen, Germany



ATEC

World Leader in Cement Pyroprocess Technology

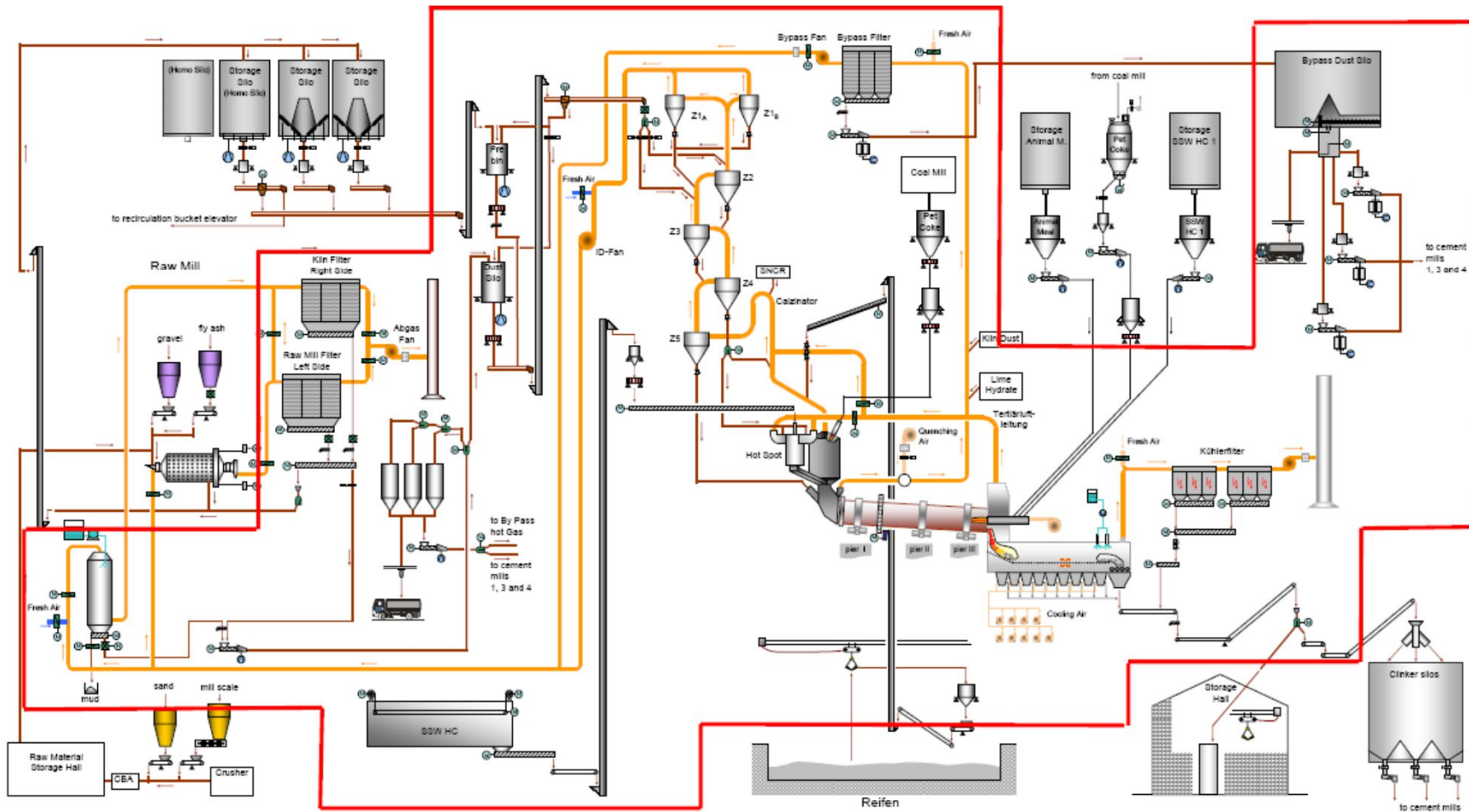
Customer:



Project “WOS FITAL1”:

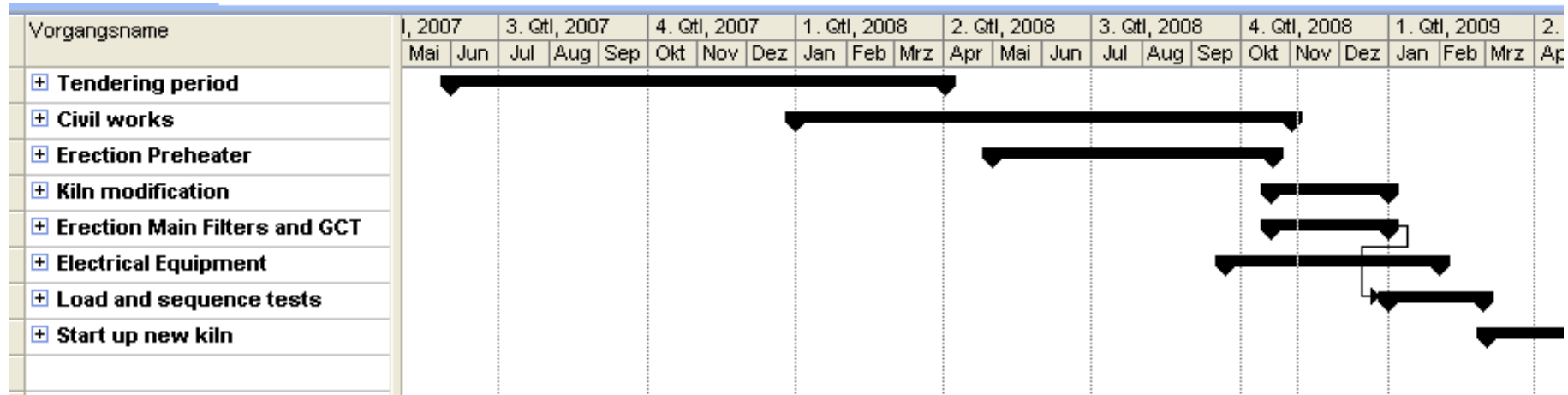
two old lines with semi-dry process → renewed to a single line dry process.

- project turnover: > 50 MEUR (> 65 million \$)
- output clinker: 1850 to/day → 2250 to/day
- alternative fuel rate: 40% → 95%



Wössingen

PROJECT TIME SCHEDULE



Main milestones:

Tendering main components (Preheater, Cooler, Filter)

Oct. 2007

Start Civil works

Jan. 2008

Erection Preheater and Cooler until

Oct. 2008

Kiln Modification and erection filters

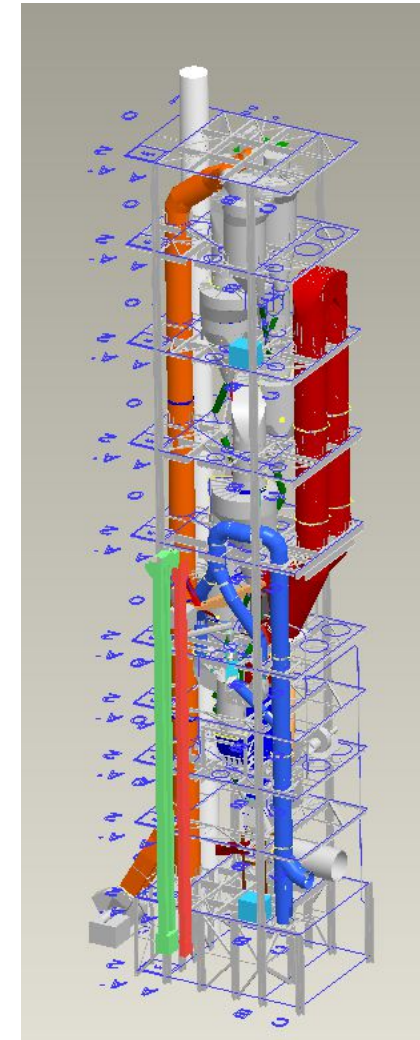
Dec. 2008

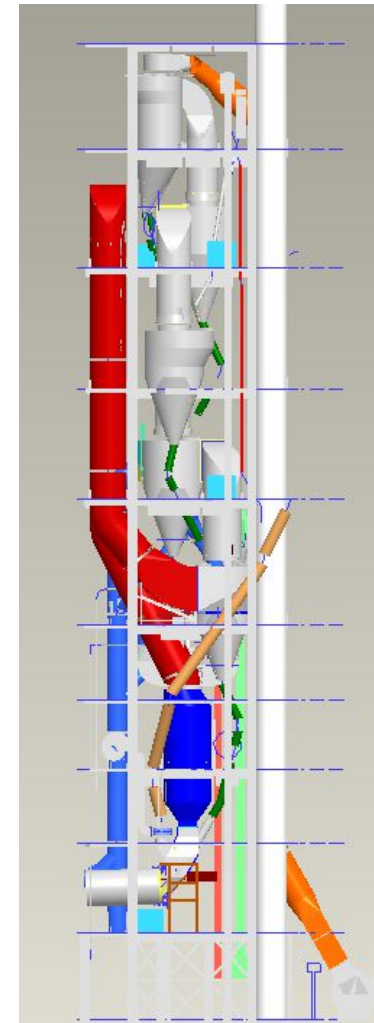
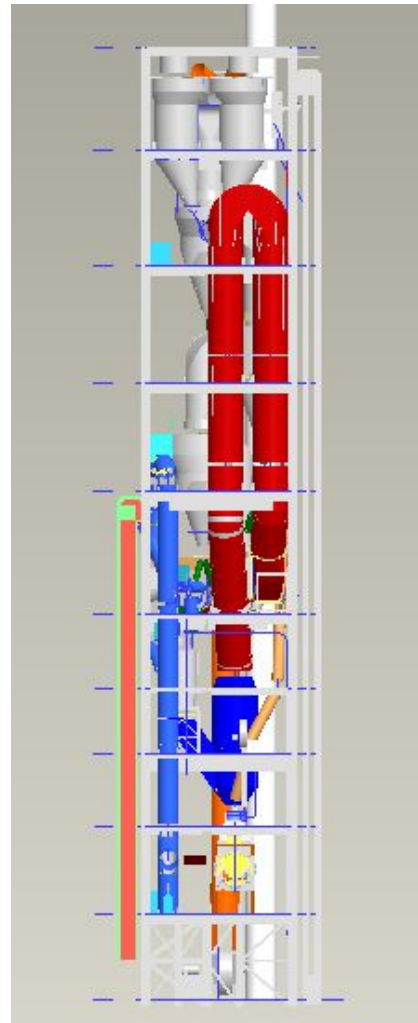
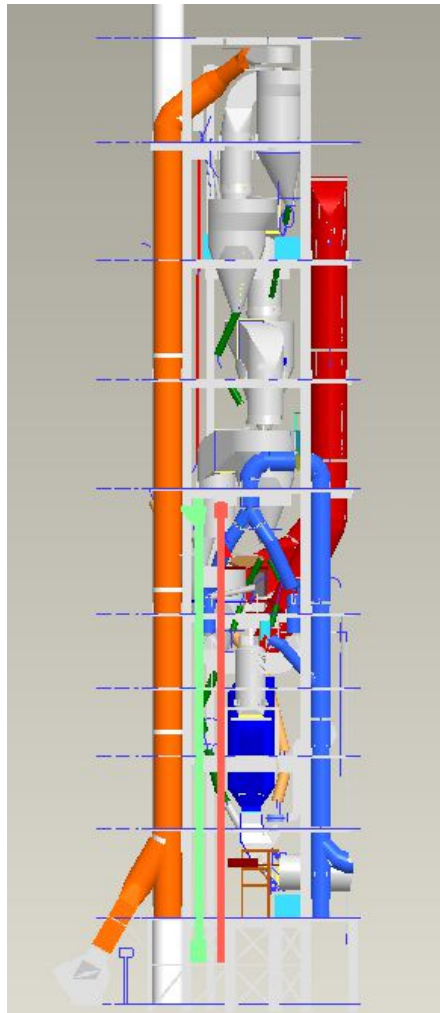
Electrical erection and tests

Feb. 2009

1st contract: Preheater tower

1. Engineering supply for:
 - 5-stage, single string preheater design
 - with hot spot calciner
 - steel structure design
2. Delivery of mechanical key components:
 - pendulum flaps
 - Tertiary air dampers
 - Kiln inlet seal
 - Alternative fuel feed and combustion burner
 - Bypass system
 - complete instrumentation
3. Manufacturing and erection supervision





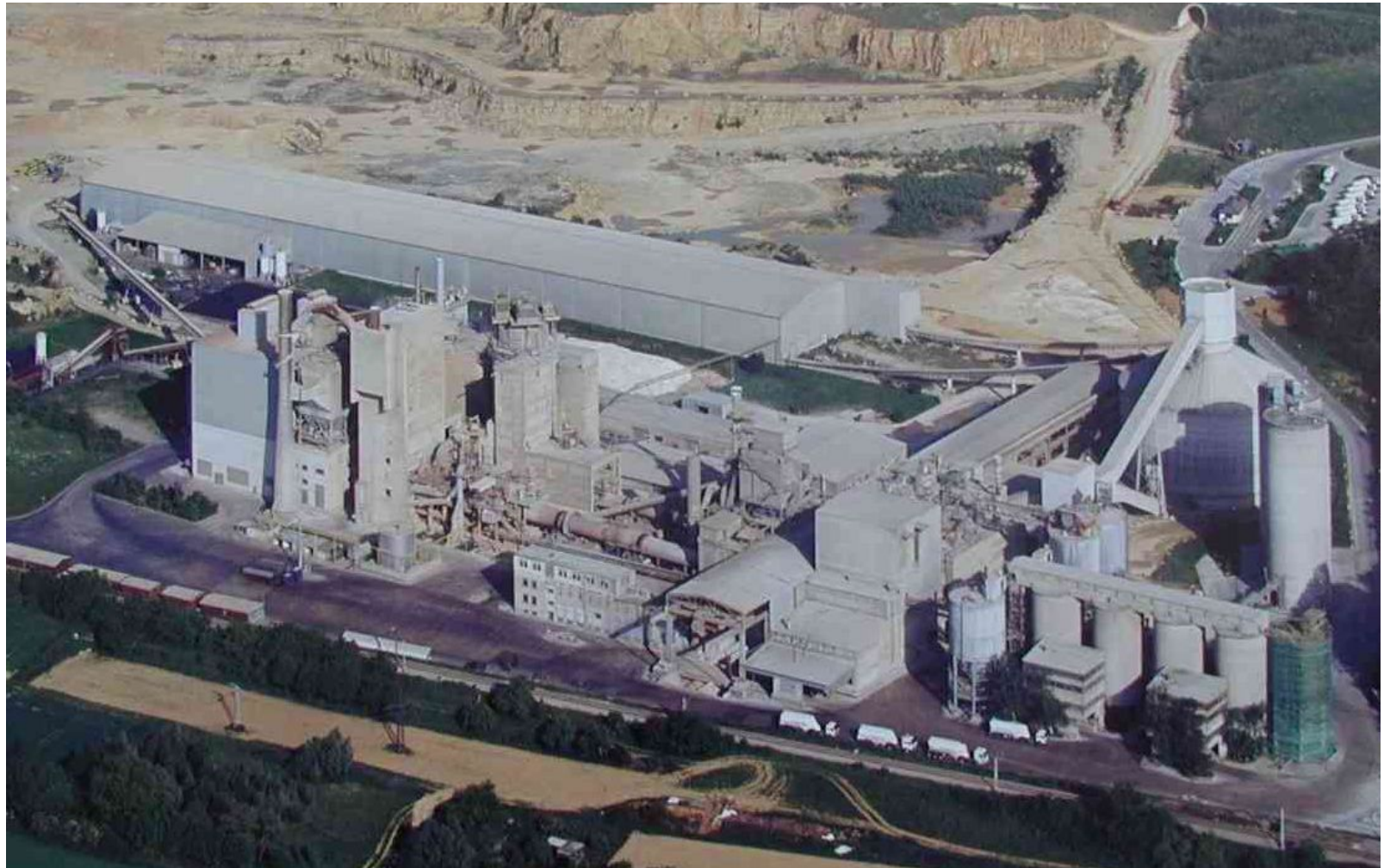
2nd contract: EPCM Services

(EPCM stands for Engineering Procurement Construction Management)

ATEC Scope of Work

- the overall project management
- plant arrangement and planning work
- review of existing process design
- process design of all main plant sections
- compilation of all enquiry documents
- complete tender evaluation
- sub-contracts negotiation
- quality assurance and progress control
- interface and technical clarification
- coordination of all civil works

Plant
before
project
start



Area for
new kiln
line



First beams
of new
preheater ins
talled





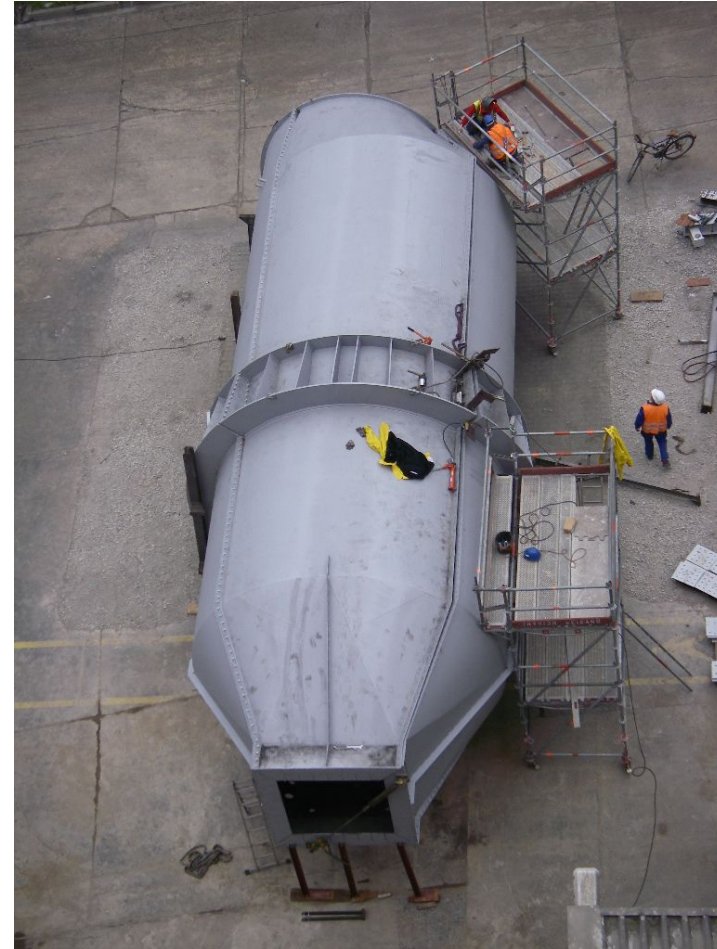
Kiln Inlet chamber



Hot Gas duct



Burning chamber



Mixing chamber



Pendulum flap



Cyclon4 cone with meal diverter



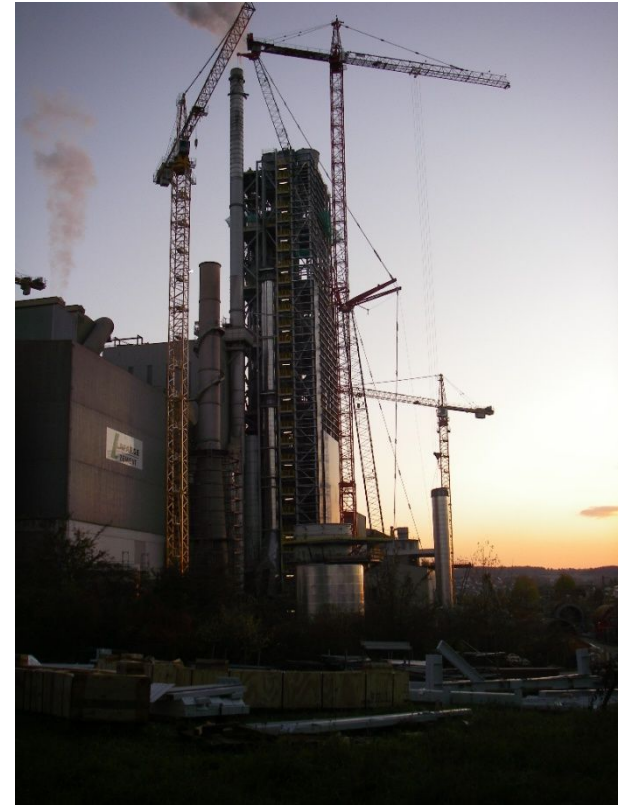
Tertiary Air Damper



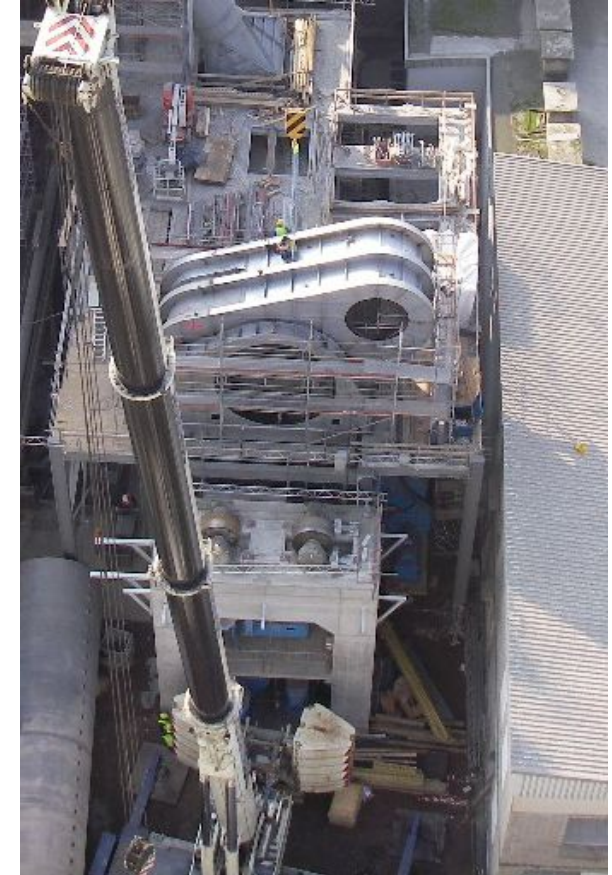
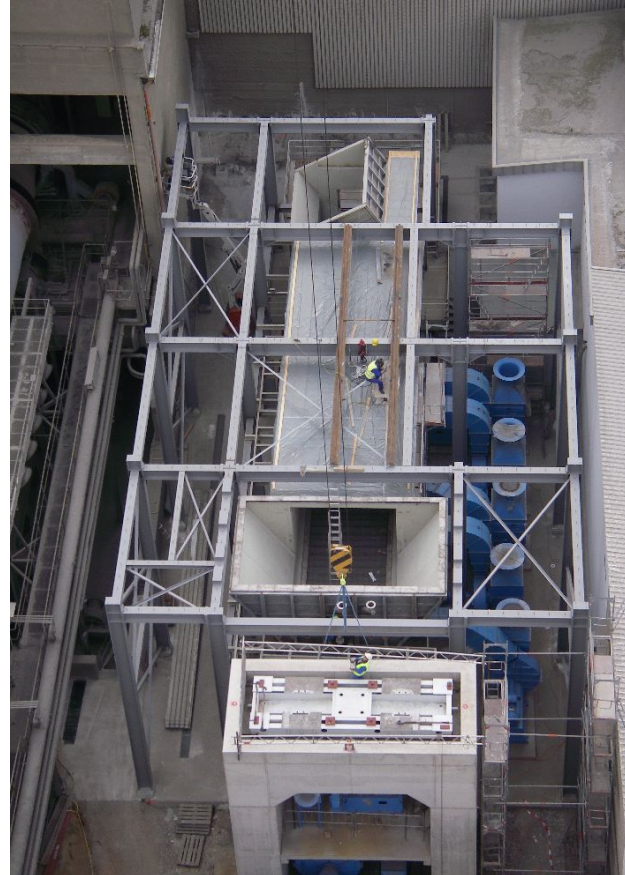
July 2008



August 2008



Sept. 2008



IKN Clinker Cooler – Grate system

New kiln
found-ations



Preheater
mainly finished



Dis-manteling
old kiln



Dis-manteling old
ESP filters and
modification to
bag filters



New Gas
Conditioning
Tower





World Leader in Cement Pyroprocess Technology

PICTURES



2009



World Leader in Cement Pyroprocess Technology

EUROPE, MIDDLE EAST, AFRICA

Administration, Finance & Sales

A TEC Production & Services GmbH

Kasernstraße 16 - 18

3500 Krems, AUSTRIA

Tel.: 0043 2732 75680

Fax: 0043 2732 75680 201

E-Mail: sales@atec-ltd.com

Engineering & Technical Center

A TEC Production & Services GmbH

Finkensteinerstraße 9

9585 Gödersdorf, AUSTRIA

Tel.: 0043 4257 3600

Fax: 0043 4257 3600 101

E-Mail: office@atec-ltd.com

Production, Maintenance & Installation

A TEC Production & Services GmbH

Steirerstraße 17

9372 Eberstein, AUSTRIA

Tel.: 0043 4264 8187

Fax: 0043 4264 8187 301

E-Mail: production@atec-ltd.com

Office Poland

A TEC GmbH

Piotr Laube, MSc Mech. Eng.

ul. Swierkowa 3

22-100 Chelm, POLAND

Mobile: 0048 661 119 222

E-Mail: piotr.laube.atec@neostrada.pl



World Leader in Cement Pyroprocess Technology

AMERICAN & ASIAN CONTINENT

America Technical Center & Sales

Austria TEC S.A. de C.V.

11 Poniento No. 2702 Dept. 5

Colonia La Paz

72160 Puebla, MEXICO

Tel.: 0052 222 889 7907

E-Mail: inbox@atec-america.com

Asia Pacific Operation

A TEC Asia Sdn Bhd

Unit 202, Block E, Phileo Damansara I

Jln 16/11, 46350 Petaling Jaya,

Selangor, MALAYSIA

Tel.: 0060 3 7955 3166

Fax: 0060 3 7955 3177

E-Mail: info@atec-asia.com

Liaison Office India

A TEC Asia Sdn Bhd

756, 2nd Floor, Dashmesh Plaza, Secotr 20-B,

Faridabad 121 007, Haryana, INDIA

Tel.: 0091 129 4109026

Fax: 0091 129 4104026

E-Mail: info@atec-asia.com

Office China

A TEC Technology Services (Beijing) Co., Ltd.

Unit 2205, Chao Wai SOHO, No.6 B, Chaowai Street,

Chaoyang District, Beijing, PR CHINA

Tel: 0086 10 5900 0860

Fax: 0086 10 5900 0837

Email: china@atec-asia.com

THANK YOU FOR YOUR ATTENTION

Please visit www.atec-ltd.com



A TEC

World Leader in Cement Pyroprocess Technology



A T E C